

LIVE OUTSIDE.®



newline®
HARDSCAPES
A DIVISION OF YORK BUILDING PRODUCTS

2023 PRODUCT CATALOG



LIVE OUTSIDE.®

We are more than **craftsmen** of pavers and walls. We make an enjoyable outdoor living experience for you and your family possible.

Our mantra at NewLine is "**Live Outside.**" Our goal is to help you create an outdoor experience so perfect you won't want to go back inside.

We invite you to journey through these pages and preview the possibilities of what living outside with NewLine Hardscapes can be.

Our friendly dealer showrooms are ready to meet with you to **explore your dreams**. You can find the dealer closest to you by visiting us at www.newlinehardscapes.com.

Welcome home... to **living outside.**

FONTANA OUTDOORS

1901 Horseshoe Pike

Annville, PA 17003

[717-867-2244](tel:717-867-2244)

www.FontanaOutdoors.com

sales@fontanaoutdoors.com

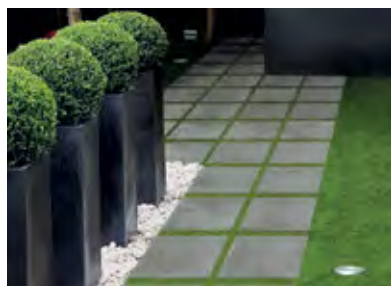
FOLLOW US



Inside...

paver collection

Veranda™ and Veranda XL™	6-7
Chateau™ and Chateau XL™	8-9
Village Cobble™	10-11
Provence Cobble™	12-13
Holland Stone™	14-15
Coping™	16-17
Breton™ (permeable)	18-19
Westminster™ (permeable)	20
Turfstone™ (permeable)	21



porcelain tile collection

Bluestone & Flagstone	24-25
18" x 36" Tiles	26-27
24" x 24" Tiles	28-29
12" x 48" Planks	30-31

rosetta collection

Outcropping™ Wall	34-35
Belvedere™ Wall	36-37
Kodah™ Wall	38-39
Dimensional Wall™	40-41
Coping & Caps	42-43
Dimensional Flagstone™	44-45
Grand Flagstone™	46-47
Dimensional Step™	48
Irregular Step™	49
Superior Steppers™	50
Rosetta Fire Pits	51



wall collection

4-Inch High:

Ashland™	54
Yorkshire™	55

6-Inch High

Stonegate®	56-57
Stonegate® Contemporary	58-59
Napa®	60-61
Sonoma™	62-63
StoneLedge™	64-65
Regal Stone®	66
Regal Stone® RockFace	67

8-Inch+ High:

Regal Stone Pro®	70
Regal Stone Pro® RockFace	71
Compac®	72
Compac® Contemporary	73
Cornerstone® 100	74-75
MagnumStone™	76



trim & finishing collection

Rock Face Caps, Steps, Treads	76-77
Napa® Curbstone	78
EdgeStone™	79
Fire Pits	80-81
Landscape Lighting	82-83



installation accessories

Installation Accessories	84
--------------------------	----

specifications, care & warranty

Product Specifications Matrix	86-90
Warranty and Care Information	91



coping in fieldstone



pavers

Veranda™ and Veranda XL™	6-7
Chateau™ and Chateau XL™	8-9
Village Cobble™	10-11
Provence Cobble™	12-13
Holland Stone™	14-15
Coping™	16-17
Breton™ (permeable)	18-19
Westminster™ (permeable)	20
Turfstone™ (permeable)	21



The “No Plate Compactor” icon appears next to products that should not be machine tamped.



veranda™ in coastal tan

Veranda™ and Veranda XL™

Designed as an oversized, three-piece slab system, Veranda smooth-faced pavers deliver a sleek, modern style and sophistication. Install as a stand-alone three-piece system or combine with the Veranda XL series to create a six-piece paving system.



Veranda (Bundled)



4x8x2 $\frac{3}{8}$

8x8x2 $\frac{3}{8}$

8x12x2 $\frac{3}{8}$

Veranda XL (Bundled)

Veranda XL not recommended for vehicular applications.
(XL available in Coastal Tan and Mountain Ridge only.)



8x16x2 $\frac{3}{8}$

16x16x2 $\frac{3}{8}$

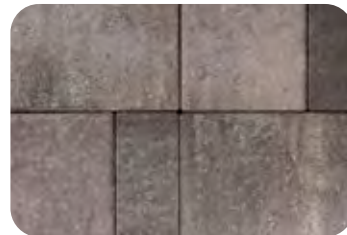
16x24x2 $\frac{3}{8}$



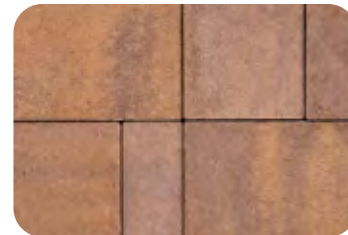
coastal tan



fieldstone



granite



mesquite



mountain ridge

Color swatches are for reference. Please refer to actual samples for proper color matching.



chateau xl™ in fieldstone

Chateau™ and Chateau XL™

A more casual, oversized, three-piece slab system, Chateau uses rectilinear shapes, slate-textured surfaces and rounded edges to recall the timeless appeal of weathered cut flagstone. Install as a stand-alone three-piece system or combine with the Chateau XL series to create a six-piece paving system.



Chateau (Bundled)



4x8x2³/₈

8x8x2³/₈

8x12x2³/₈

Chateau XL (Bundled)

Chateau XL not recommended for vehicular applications.



8x16x2³/₈

16x16x2³/₈

16x24x2³/₈



coastal tan



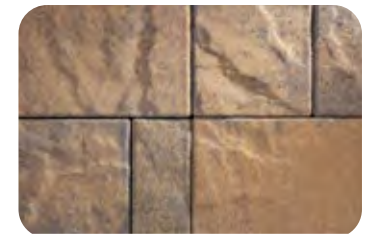
fieldstone



granite



mesquite



mountain ridge

Color swatches are for reference. Please refer to actual samples for proper color matching.



village cobble™ in mesquite

Village Cobble™

Our classic, most popular paver features a textured finish with rounded edges. Each size is sold separately, allowing you to mix and match sizes to meet your specific design needs.



6x6x2 $\frac{3}{8}$



6x9x2 $\frac{3}{8}$



9x9x2 $\frac{3}{8}$

Each size sold separately.



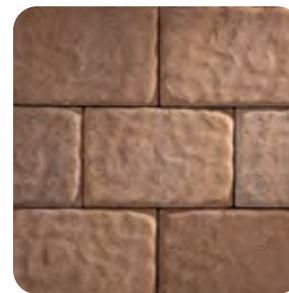
coastal tan



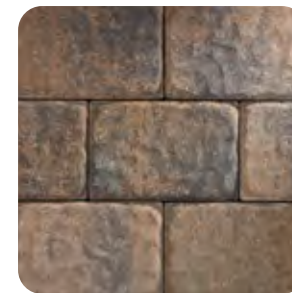
fieldstone



granite



mesquite



mountain ridge

ACCENT COLORS (6x9 UNITS ONLY)



charcoal



mocha



provence cobble in fieldstone

Provence Cobble™

Reminiscent of lingering outside on warm summers in southern France, Provence Cobble features a flat, antiqued finish with an old-world feel. The system is available in two different sizes (each sold separately), allowing you to customize your look.



6x6x2 $\frac{3}{8}$



6x9x2 $\frac{3}{8}$

Each size sold separately.



coastal tan



fieldstone



granite



mesquite

Color swatches are for reference. Please refer to actual samples for proper color matching.



holland stone in granite

Holland Stone™

The design flexibility, simple rectangular shape, and ease of installation make Holland Stone a favorite for homeowners. Holland Stone is often used as an accent or border course with other NewLine pavers.



4x8x2³/₈



fieldstone



granite



coping in granite

Coping™

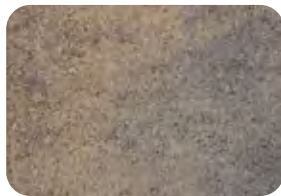
Our Coping unit provides a smooth, soft roll to the edge of your patio or step application. Coping can be used for applications such as swimming pools, deck overhangs, step treads, seating areas and wall caps.



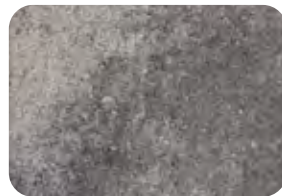
6x12x2 $\frac{3}{8}$



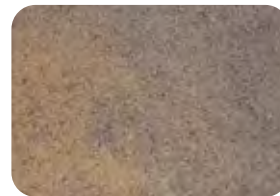
coastal tan



fieldstone



granite



mesquite



mountain ridge

ACCENT COLORS



charcoal



mocha



breton in fieldstone

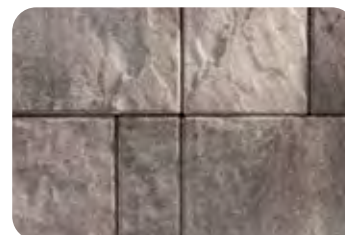
Breton™

Breton **permeable pavers** provide the appearance of an old granite paver that has been in the ground for centuries. This three-piece system is crafted with a natural, stone-cleft finish.

Enlarged lugs on the sidewalls of the units create quarter-inch joints which, when filled with a properly-sized aggregate, drain water to the permeable base. This infiltration filters stormwater and recharges groundwater sources, creating a sustainable pavement option.



fieldstone



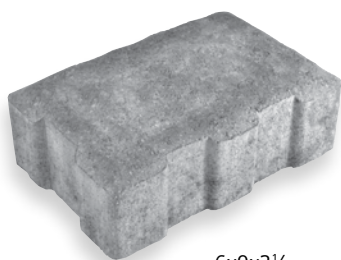
granite



westminster in fieldstone

Westminster™

Westminster is a traditional-looking **permeable paver** that is both visually attractive and pedestrian friendly. This system is designed to meet or exceed current stormwater management requirements. Its rectangular shape and structurally-sound herringbone pattern make it suitable for vehicular applications.



6x9x3½



fieldstone



granite



Turfstone™

A rectangular, **permeable slab** with open grids that allow water to pass through the system. Turfstone can be used for overflow parking, erosion control and parking lots where permeable paving is required. The open voids can be filled with drainage aggregate for maximum infiltration or soil to allow greenery to grow.



16x24x3 1/8"



pewter

DISCOVER THE BENEFITS OF *Porcelain*.



ANTI-SLIP

The structure and texture of the porcelain paver surface reduces the risk of slipperiness.



NO SEALING NEEDED

No sealers are needed because Landmark Frontier20 is so dense, virtually nothing can stick to it!



RESISTANT TO ACID & CHEMICALS

Made with inert ingredients that do not react or accept acids and or chemicals, allowing you to make environmentally friendly cleaning decisions!



RESISTANT TO THERMAL SHOCK

Landmark's porcelain pavers are baked at temperatures up to 2300 degrees F which in turn generates a strong molecular bond, producing a very dense paver. Due to its density level, it becomes inert, allowing for extreme and sudden temperature changes within the temperature range of - 60 F +140 F.



ECO-FRIENDLY

Landmark Frontier20 porcelain pavers are produced in an environmentally-friendly facility, following the strictest state and federal regulations. Because of Landmark's environmental commitment, we can incorporate up to 20% recycled content in our USA-made porcelain pavers.



RESISTANT TO SALTS

Landmark Frontier20 porcelain pavers are completely unaffected by use of salts.



EASY TO REPLACE AND REMOVE

When not mortared or installed with adhesive, Landmark's Frontier20 can be easily removed and repositioned to suit your specific needs.



RESISTANT TO MOLD

Landmark Frontier20 is so dense that mold and mildew are not able to develop in a permanent fashion, making removal very easy and simple.



EASY TO INSTALL



STAIN RESISTANT

Landmark's Frontier20 porcelain pavers are virtually non-porous. Due to our specific baked-on glazing process, nothing can be absorbed-- including stains.



SCRATCH & FADE RESISTANT

Landmark Frontier20 porcelain pavers are an extremely hard surface, making them virtually scratch proof. And the baked on graphics are created using ingredients that are completely unaffected by the sun and elements.



SAVING OVER TIME

Low maintenance costs save big dollars year after year.



EASY TO KEEP CLEAN

Mild, environmentally-friendly detergents can be used when cleaning your porcelain pavers. Pressure washers up to 1500 PSI may also be used without concern for etching or striping.



DRIVEWAYS ARE OK

When properly installed over concrete*, Landmark Frontier20 porcelain pavers are suitable for light residential vehicular traffic.

* When installed over reinforced concrete (4" minimum) using a thinset mortar suitable for porcelain paver.



FROST RESISTANT

Landmark Frontier20 porcelain pavers are so dense that frost and freezing temperatures do not affect them.

porcelain tile



Bluestone & Flagstone	24-25
18 x 36 Tile	26-27
24 x 24 Tile	28-29
12 x 48 Plank	30-31



flagstone in pink-tan

Bluestone & Flagstone (3-Piece System)

These multi-sized tiles are perfect for hassle-free living on your patio. Because porcelain is so dense, it naturally repels stains such as acorns, wine and grill grease. Just a simple powerwash, and it's gone! Our three-piece system comes in a native Pennsylvania bluestone or pink-tan flagstone.



24x24x¾

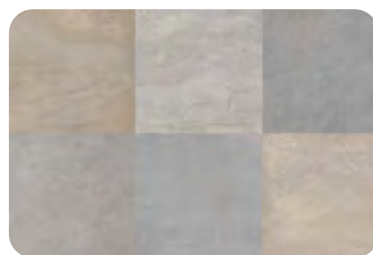


12x24x¾



12x12x¾

Each size sold separately.



bluestone full color



flagstone pink-tan

Color swatches are for reference. Please refer to actual samples for proper color matching.



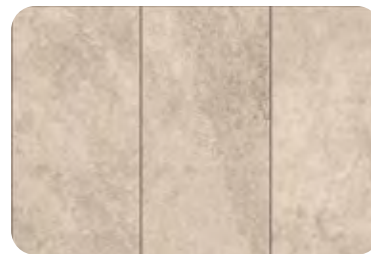
18x36 tile in source beige

18" x 36" Tile

These oversized tiles provide a sophisticated, contemporary look to your patio space. Stocked in our source beige color, the warm tan and grey tones match most any decor, and lend a dramatic touch to any project.



18x36x $\frac{3}{4}$



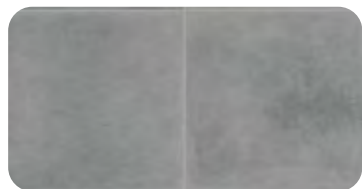
source beige



24" x 24" tile in simply grey

24" x 24" Tile

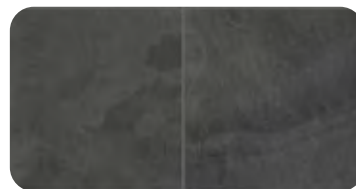
The timeless look of 24" x 24" tiles is unbeatable. For those spaces that need extra impact, these large units provide a commanding presence, and a clean aesthetic.



simply grey



limestone



vintage slab



multi-color dark



travertine cream



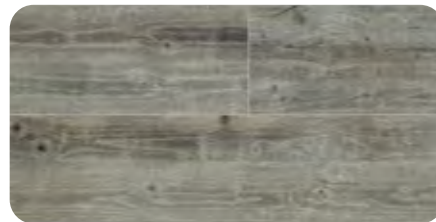
12" x 48" plank in soul walnut

12" x 48" Plank

Want the look of hardwood planks for your decking, but not the hassle of wood maintenance? Look no further than our long 12" x 48" porcelain plank system. Easy to install, and breathtakingly beautiful, it elevates any space for a premium appearance.



12x48x $\frac{3}{4}$



soul grey



soul walnut



outcropping in canyon



rosetta

Outcropping™ Wall	34-35
Belvedere™ Wall	36-37
Kodah™ Wall	38-39
Dimensional Wall™	40-41
Coping & Caps	42-43
Dimensional Flagstone™	44-45
Grand Flagstone™	46-47
Dimensional Step™	48
Irregular Step™	49
Superior Steppers™	50
Rosetta Fire Pits	51



outcropping in canyon

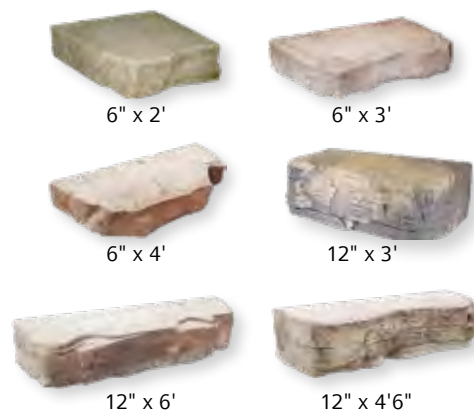
Outcropping™

The large dimensions of the Outcropping units allow you to create grand structural walls in a scale that is both believable and inspiring. Designed with 12 unique unit sizes and 24 unique stone textures to create the most natural appearance possible.

PALLET A



PALLET B



PALLET C



CORNER PALLET



ash



canyon



saddle



belvedere wall & irregular steps in canyon

Belvedere™ Wall

Our most popular Rosetta system, Belvedere gives your project the look of real natural stone because it is formed using molds from natural stone. An easy to install, 6-piece system, it provides a more rustic appearance to your space.



3x9x18



3x9x12



3x9x6



3-Inch-High Corner



6x9x18



6x9x12



6x9x6



6-Inch-High Corner



*Consider a matching fire pit
for your Belvedere wall project.
For more info, see page 51.*



ash



canyon



saddle

Color swatches are for reference. Please refer to actual samples for proper color matching.



kodah in canyon

Kodah™ Wall

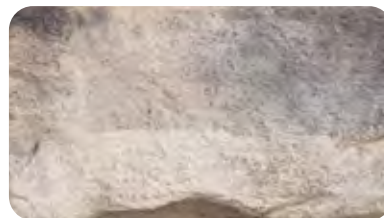
The four different sizes of the Kodah wall provides a believable chiseled limestone wall for your project. The natural cleft texture gives the wall rugged good looks. Kodah be used for retaining walls, freestanding walls, and seating walls too!



All units are packaged
on one pallet



ash



canyon



saddle



DESIGN TIP:

Build a Dimensional Wall column using the "straight" wall unit. 36 units provides a 20x20x36" column.

dimensional wall, coping and caps in canyon & saddle, mixed

Dimensional Wall™

Perfect for the do-it-yourselfer, Dimensional Wall is a simple system that is lightweight and installs quickly. Great for smaller walls, tree rings and seating areas, the natural stone texture gives this system the look of real stone in a smaller scale.



4x8x12
Straight Unit



4x8x12 (F) 4x8x7½ (B)
Wedge Unit



Consider a matching fire pit for your Dimensional Wall™ project. For more info, see page 51.



ash



canyon



saddle

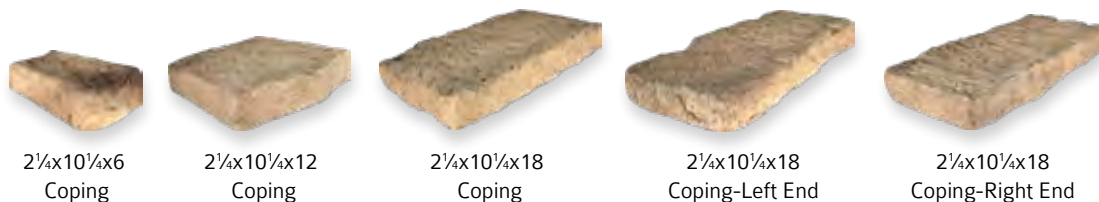


belvedere coping & caps in saddle

Coping and Caps

Capping a wall or column does more than make a project look finished. It ties all of the system elements together, and makes a project appear more professional. Our two coping/cap lines – Belvedere and Dimensional – offer a number of options to complete your project.

BELVEDERE™ COPING



5 different units; all on one pallet.

BELVEDERE™ CAPS



Caps sold separately.

DIMENSIONAL™ COPING



3 different units; all on one pallet.

DIMENSIONAL™ CAPS



Caps sold separately.



ash



canyon



saddle

Color swatches are for reference. Please refer to actual samples for proper color matching.



dimensional flagstone in canyon

Dimensional Flagstone™

Dimensional Flagstone is the perfect choice for graceful walkways, pool decks and elegant patios that require consistent dimensions and a more formal, sophisticated look. All shapes are available on every pallet layer, making installation quick and easy.



TRI-RESISTENT

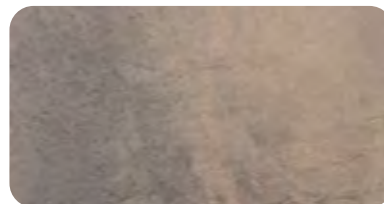
There's no jagged edges or uneven seams with the consistent 2-inch (51-millimeter) thickness of Dimensional Flagstone. That means less tripping hazards for toddlers to retirees than with natural stone.



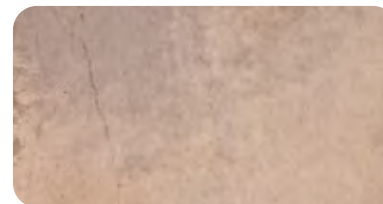
All 6 shapes on one pallet.



ash



canyon



saddle

Color swatches are for reference. Please refer to actual samples for proper color matching.



grand flagstone in saddle

Grand Flagstone™

Give your patio a less rigid appearance with Grand Flagstone. Perfect for patios, pathways, pool decks, outdoor kitchens and more. Grand Flagstone slabs maintain the attractive texture and scale of large natural flagstones, but can be laid in an easy-to-install pattern



LAYER 1



LAYER 2



LAYER 3



LAYER 4

Each layer is comprised of multiple random 1¾" thick shapes. Four different 4-piece patterns. All layers on one pallet.



ash



canyon



saddle

Color swatches are for reference. Please refer to actual samples for proper color matching.



dimensional step in ash

Dimensional Step™

The Dimensional Step is ideal for more formal, linear settings, providing you with the rugged beauty of natural stone, while combining it with the comfort and safety of a uniform rise.



7"Hx18"Dx48"L



ash



canyon



saddle



irregular step in canyon

Irregular Step™

The Irregular Step is perfect for free-flowing, natural staircases, providing you with the rugged attractiveness of natural stone and combining it with the safety and comfort of a uniform rise.



ash



canyon



saddle



7"H x 2'D x 5'L



7"H x 2'4"D x 4'L



7"H x 2'2"D x 3½'L

Color swatches are for reference. Please refer to actual samples for proper color matching.



superior steppers in canyon

Superior Steppers™

Lay a charming garden walkway or casual path to gently guide your way. These natural-looking stones are crafted with high-strength, quality materials for a pathway that will look like it's been in place for ages.



- Unit dimensions vary by shape; roughly 27" x 21"
- 2x each or 8 different shapes



ash



canyon

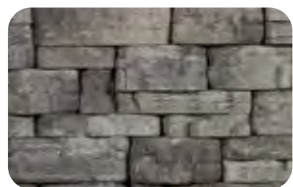


saddle



belvedere fire pit in canyon

Rosetta Fire Pits



ash



canyon



saddle

Color swatches are for reference. Please refer to actual samples for proper color matching.

DIMENSIONAL™ SQUARE PIT



12x44x44



Optional square
steel insert

BELVEDERE™ ROUND PIT



14½x58



Optional round
steel insert



stoneledge wall in fieldstone



walls

4-Inch High:

Ashland™	54
Yorkshire™	55

6-Inch High:

Stonegate®	56-57
Stonegate® Contemporary	58-59
Napa®	60-61
Sonoma™	62-63
StoneLedge™	64-65
Regal Stone®	66
Regal Stone® RockFace	67

8-Inch+ High:

Regal Stone Pro®	70
Regal Stone Pro® RockFace	71
Compac®	72
Compac® Contemporary	73
Cornerstone® 100	74-75
MagnumStone™	76



ashland wall in fieldstone

Ashland™

Ashland is a lightweight, double-sided unit that is tumbled and tapered, making it ideal for applications such as tree rings, planter beds and fire pits. This wall can be paired nicely with the Yorkshire wall to create an ideal outdoor living space.



4x8x9



Consider a matching fire pit for your Ashland wall project. For more info, see page 81.



coastal tan



fieldstone



granite



mesquite



yorkshire in coastal tan

Yorkshire™

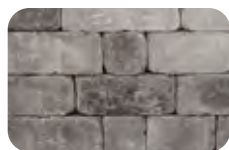
Yorkshire is a tumbled, single-piece wall system that is perfect for garden and seating wall applications. Because of the unit's symmetry, it can be turned in different directions to create a unique look. It's also great for building fire pits, outdoor kitchens, fireplaces and more.



coastal tan



fieldstone



granite



mesquite

Consider a matching fire pit for your Yorkshire wall project. For more info, see page 81.



4x12x8

Color swatches are for reference. Please refer to actual samples for proper color matching.



stonegate in fieldstone

Stonegate®

Featuring the look of weathered cut-stone you might find in a quaint European town, Stonegate has a more refined look than split face wall units. Utilizing a pinned connection method, two different heights and six different shapes, Stonegate is suitable for retaining and freestanding wall projects.



coastal tan



fieldstone



granite



mesquite



stonegate contemporary in granite

Stonegate® Contemporary

The smooth, uniform face and finished edges of Stonegate Contemporary create a modern, sleek look. Stonegate Contemporary is also great for parapet walls, pilasters, columns, stairs and outdoor living elements such as kitchens, fireplaces, fire pits, benches and more. Like traditional Stonegate, Stonegate Contemporary features six different units, which simplifies the creation of random patterns and assure stunning results.



3x10x6



3x10x11



3x10x17



3" square cap



6x10x6



6x10x11



6x10x17



Stonegate® walls use DOM pins to ensure proper wall alignment. Pins sold separately.



coastal tan



fieldstone



granite



mesquite

Color swatches are for reference. Please refer to actual samples for proper color matching.



napa wall in fieldstone

Napa[®]

The Napa double-sided wall is a beautiful way to frame your patio with seating walls, border a walkway or build a retaining wall. With a soft, weather-worn look, this six-piece system, available in two different heights, provides endless design options.



3x9x6



3x9x11



3x9x17



6x8x17 corner/column unit
Column Size: 25 x 25 x 72



6x9x6



6x9x11



6x9x17



3x11½x15
rectangle cap



coastal tan



fieldstone



granite



mesquite



Sonoma™

Sonoma walls are based on the same unit system as our popular Napa wall; however, Sonoma is untumbled, giving it a crisp, contemporary profile. A great choice for homeowners who desire a less weathered and more structured appearance.



3x9x6



3x9x11



3x9x17



6x8x17 corner/column unit
Column Size: 25 x 25 x 72



6x9x6



6x9x11



6x9x17



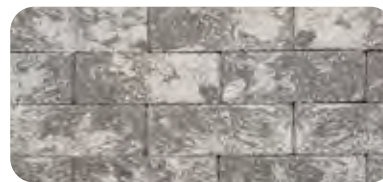
3x11½x15
rectangle cap



coastal tan



fieldstone



granite



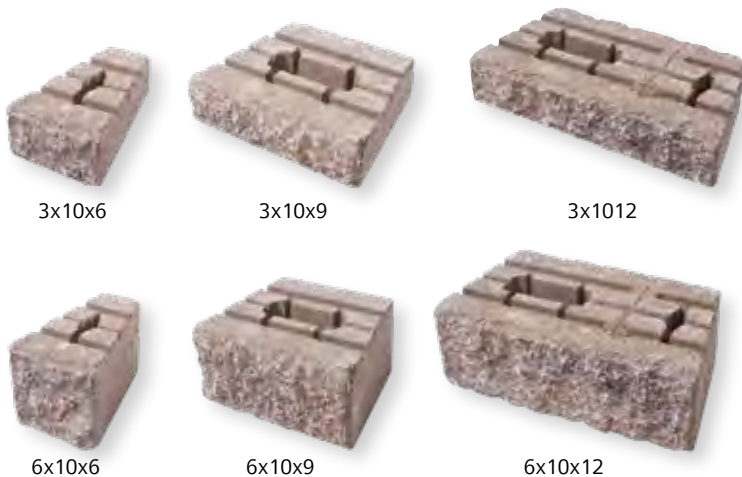
mesquite



stoneledge in fieldstone

StoneLedge™

StoneLedge features a double-sided, multi-sized, tapered wall system that possesses the hand-finished look of quarried stone. Ideal for residential or commercial wall projects. The flexibility, quarried face and endless random patterns make StoneLedge an excellent choice.



StoneLedge walls use alignment connectors to ensure proper wall alignment. Connectors sold separately.



*Consider a matching fire pit
for your StoneLedge wall.
For more info, see page 81.*



coastal tan



fieldstone



granite



mesquite

Color swatches are for reference. Please refer to actual samples for proper color matching.



regal stone in coastal tan

Regal Stone®

A great choice when your project calls for classic, clean lines. The straight face style provides an attractive retaining wall for residential or commercial applications.



6x17 1/4x12



6x16x12
step



3x15x13
universal cap



coastal tan



fieldstone



granite



mesquite



regal stone rock face in coastal tan

Regal Stone® Rock Face

With its more weather-worn appearance, Regal Stone RockFace offers a natural look. Based on the original Regal Stone unit, it provides the same benefits, simplicity, and flexibility.



coastal tan



fieldstone



granite



mesquite

Color swatches are for reference. Please refer to actual samples for proper color matching.



3x15x13
universal cap



6x16x12
step



6x16x12



regal stone pro in granite

Regal Stone Pro[®]

Featuring one square foot of wall space per unit, Regal Stone Pro is a great choice for taller walls. The straight face finish provides a clean appearance, and a rear-lip alignment system means no pins or clips are necessary.



8x18x12



8x18x9 corner



3x15x13 universal cap



coastal tan



fieldstone



granite



mesquite



regal stone pro rock face in coastal tan

Regal Stone Pro® RockFace

Regal Stone Pro RockFace offers a softer, more rough-hewn finish to the original Regal Stone Pro.



coastal tan



fieldstone



granite



mesquite



3x15x13 universal cap



8x18x9 corner



8x18x12

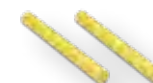
Color swatches are for reference. Please refer to actual samples for proper color matching.



compac in granite

Compac[®]

Great for taller walls, Compac is a straight face, square foot unit, featuring a pinned connection system for alignment.



Compac walls use straight pins to ensure proper wall alignment. Pins sold separately.



8x18x12



8x18x12 corner



4x18x12
rectangle cap



coastal tan



fieldstone



granite



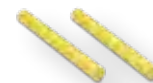
mesquite
(special order)



compac contemporary in granite

Compac[®] Contemporary

Featuring the same benefits as our standard Compac wall system, this contemporary unit utilizes a smooth face finish to deliver a fresh, new, linear appearance.



Compac walls use straight pins to ensure proper wall alignment. Pins sold separately.



coastal tan



fieldstone



granite



3x12x12 square cap



8x18x9 corner



8x18x12

Color swatches are for reference. Please refer to actual samples for proper color matching.



cornerstone 100 in coastal tan

CornerStone® 100

CornerStone 100 offers the perfect combination of strength and beauty, and is ideal for everything from residential landscaping to large commercial projects. Each unit features a single, large, hollow-core SecureLug® connection and tapered sides, allowing for durability, flexibility and easy installation.



8x18x12



8x18x9 corner



4x18x12 rectangle cap



coastal tan



fieldstone



granite



mesquite
(special order)



magnumstone in ash

MagnumStone®

MagnumStone is a large block (24x48) retaining wall system that is especially effective when used where space is limited behind the wall (unable to excavate for geogrid, due to site constraints).

Stocked in our natural color, the units can be field-tinted to provide a more realistic stone coloring. Please visit the York Building Products website for more details on unit shapes, sizing and technical specifications. www.yorkbuilding.com



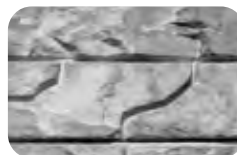
base unit



half-high unit



corner unit



ash



canyon



saddle



natural
(stocked)

trim & finishing

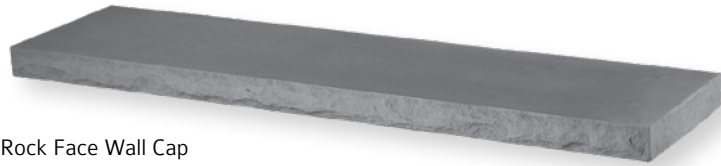
Rock Face Caps, Steps, Treads	76-77
Napa Curbstone	78
EdgeStone	79
Fire Pits	80-81
Landscape Lighting	82-83
Installation Accessories	84



rock face landscape steps, in charcoal

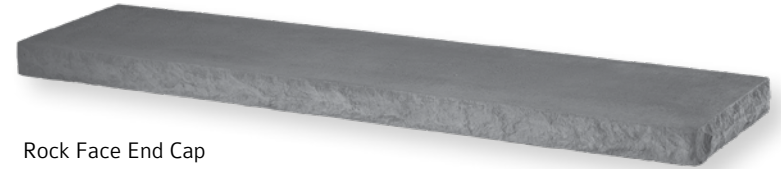
Rock Face Caps, Steps and Treads

It's the little things that matter. Finishing off a great patio with caps, steps and stair treads makes a project look more professional, and adds to the overall richness of a project.

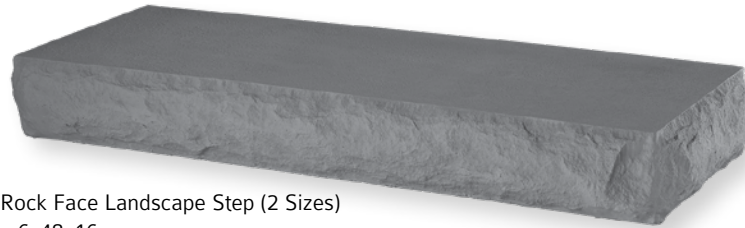


Rock Face Wall Cap
2 1/4x48x12

WALL CAPS



Rock Face End Cap
2 1/4x51x12

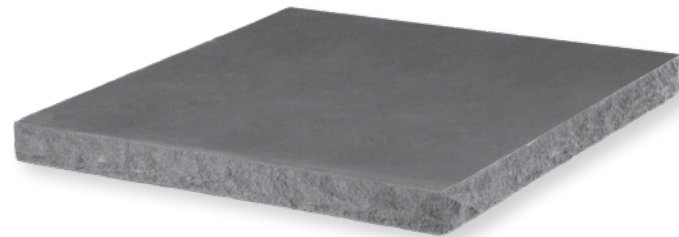


Rock Face Landscape Step (2 Sizes)
6x48x16
6x72x16

STEPS

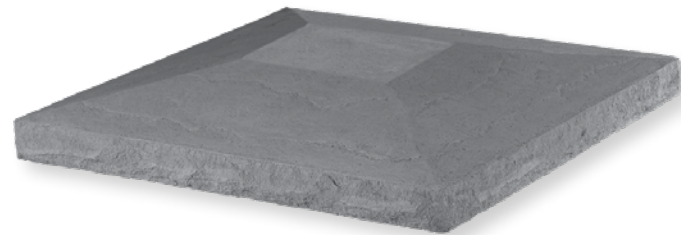


Rock Face Step Tread
2 1/4x51x12



Flat Column Cap (2 Sizes)
2x28x28
2x30x30

PILLAR CAPS



Light-Top Column Cap (2 Sizes)
2x28x28
2x30x30



charcoal



mocha



napa curbstone in fieldstone

Napa[®] Curbstone

Napa Curbstone provides a unique border option for walkways, flowerbeds and driveways.



8x8x3



coastal tan



fieldstone



granite



mesquite



edgestone in granite

EdgeStone™

Achieve the look of Belgian block with this more durable alternative to wood edging or plastic edge restraints. Features a chiseled-look face.



6x12x4



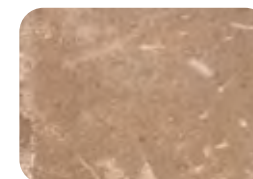
coastal tan



fieldstone



granite



mesquite

Color swatches are for reference. Please refer to actual samples for proper color matching.



stoneledge fire pit in granite



coastal tan



fieldstone



granite



mesquite

COPING COLORS



charcoal



mocha

Fire Pits

What better way to enjoy your outdoor living area than to gather around a beautiful fire pit with friends and family? Cool summer evenings can be savored longer with this inviting, warm retreat.

ASHLAND™ PIT



20 ½"H x 48 ½" Dia



Optional steel insert
(works with or without coping)



Optional 4-piece radius coping
50 x 29½

STONELEDGE™ PIT



17 ½"H x 50" Dia



Optional steel insert
(works with or without coping)



4-piece radius coping
54½ x 29½

YORKSHIRE™ RECTANGLE PIT



16 ½"H x 46x44x16"



Optional rectangle steel insert
35½ x 23½ x 9

YORKSHIRE™ SQUARE PIT



20 ½"H x 44x44x16"



Optional square steel insert
27¾ x 27¾ x 9¾

IMPORTANT NOTE:

Burning large items or trash in fire pits may cause damage to block units. Our fire features are designed strictly for small campfires.

NewLine Hardscapes is not responsible for any damage to the fire pit or radius coping if it is not installed with a steel insert.

Landscape Lighting



Accent Lights

UPLIGHT SPOT - Solid Brass 110-LMAFSB



Shroud: Mach. brass w/tempered glass
Spike: PVC slotted stake
Lens: Convex
Finish: Antique Brass
Socket: Bi-Pin GU5.3
Electrical: 12 volt
Wiring: 3' 18/2, SPT-2W UL wire
Std Lamp: 5W LED MR16

UPLIGHT SPOT - Aluminum 110-LMAFBA



Shroud: Machined aluminum
Spike: PVC slotted stake
Lens: Convex
Finish: Brown
Socket: Bi-Pin GU5.3
Electrical: 12 volt
Wiring: 3' 18/2, SPT-2W UL wire
Std Lamp: 5W LED MR16

ADJUSTABLE SPOT - Solid Brass 110-LMAASB



Lens: Convex
Finish: Antique Brass
Socket: Bi-Pin GU5.3
Electrical: 12 volt
Wiring: 3' 18/2, SPT-2W UL wire
Std Lamp: 5W LED MR16

Wash Lights

WASH LIGHT Large 110-LMLWWLSAB



Shroud: Mach. brass w/tempered glass
Spike: PVC slotted stake
Lens: Frosted glass
Finish: Antique Brass
Socket: Bi-Pin GU5.3
Electrical: 12 volt
Wiring: 3' 18/2, SPT-2W UL wire
Std Lamp: 4522: 5W LED MR16
 9131: G4 MAX 5W

WASH LIGHT Small 110-LMLWWMSAB



Shroud: Mach. brass w/tempered glass
Spike: PVC slotted stake
Lens: Frosted glass
Finish: Antique Brass
Socket: Bi-Pin GU5.3
Electrical: 12 volt
Wiring: 3' 18/2, SPT-2W UL wire
Std Lamp: 4522: 5W LED MR16
 9131: G4 MAX 5W

Specialty Lights

WALL / STAIR / RAIL LIGHT- Brass 110-LMHLBSB



Housing: Brass
Finish: Antique Brass
Power: 4 Watts
Color Temp: 2700°K
Lens: Clear
Mounting: Stainless steel bracket
Wiring: 3' 18/2, SPT-2W UL wire

WALL / STAIR / RAIL LIGHT- Aluminum



110-LMHLBA Brown
 110-LMHLBLA Black
 110-LMHLGA Gray

Housing: Aluminum
Power: 4 Watts
Color Temp: 2700°K
Lens: Clear
Mounting: Stainless steel bracket
Wiring: 3' 18/2, SPT-2W UL wire
Finish: Black, brown, gray

Specialty Lights

TIKI LAMP - Solid Brass 110-LMTTLSB



Housing: Heavy-duty solid brass
Finish: Antique Brass
Electrical: 12 volt
Wiring: 3' 18/2, SPT-2W UL wire
Std Lamp: G4 MAX 5W

IN-GROUND PATH - Brass 110-LMINALSBL



Housing: Heavy-duty brass shroud
Finish: Antique Brass
Lens: Clear
Electrical: 12 volt
Wiring: 3' 18/2, SPT-2W UL wire
Std Lamp: 5W LED MR16

LM5WL30D - 5 watt Lamp, 30 degree



Beam angle: 30-degrees
Power Consumption: 5 watts
Electrical: AC/DC 12 volt
Lumens: 315
CCT: 2700K

LM3WL - 3 Watt Lamp, G4



Beam angle: 360°*
Power Consum.: 3 watts
Electrical: AC/DC 12 volt
Lumens: 260-290
CCT: 2700K



lume wall light

Specialty Equipment



LMW250 –
12/2 LV Wire, 250'

LMW500 –
12/2 LV Wire, 500'

LMWN –
Wire Nuts



LMMT –
Mechanical Timer



LMPC –
Photo Cell



Transformers

75 WATTS



110-LMTRANS75SS

150 WATTS



110-LMTRANS150SS

300 WATTS



110-LMTRANS300SS

Pathway Fixtures

CHINA CAP STYLE - Brass



110-LMPLCSB

Housing: Heavy-duty solid brass
Finish: Antique Brass
Spike: PVC slotted stake
Electrical: 12 volt
Wiring: 3' 18/2, SPT-2W UL
Std Lamp: G4 MAX 5W

CHINA CAP STYLE - Aluminum



110-LMPLCBA

Housing: Heavy-duty aluminum
Finish: Brown
Electrical: PVC slotted stake
Spike: 12 volt
Wiring: 3' 18/2, SPT-2W UL
Std Lamp: G4 MAX 5W

PATHLIGHT - Brass



110-LMPLSB

Housing: Heavy-duty solid brass
Finish: Antique Brass
Spike: PVC slotted stake
Electrical: 12 volt
Wiring: 3' 18/2, SPT-2W UL
Std Lamp: G4 MAX 5W

PATHLIGHT DOME - Aluminum



110-LMPLDBA

Housing: Heavy-duty aluminum
Finish: Brown
Spike: PVC slotted stake
Electrical: 12 volt
Wiring: 3' 18/2, SPT-2W UL
Std Lamp: G4 MAX 5W

Installation Accessories



Polymeric Sand
Polymeric Stone Dust
Nails
Edging
Polyurethane Adhesive XP
Concrete Adhesive HP
Base
Sealers & Cleaners
Landscape Fabric
Geo-Grid



GATOR NITRO SAND



Gator Nitro Joint Sand is a ready-to-use mixture of calibrated sand and resins which cure when exposed to air, hardening from top to bottom of the joint. The product can be installed in wet or dry weather, in joints ranging from a minimum 3/16" (5 mm) to a maximum 2" (50 mm) joint width. The minimum joint depth is 1" (25 mm).

- **25% More strength**
- **25% Faster setting time**

GATOR XTREME EDGE



Gator XTreme Edge is the ultimate fiber-reinforced and polymer-modified structural edge, which creates a strong and economical edging solution for any hardscape project.

Gator XTreme Edge can be used on any traditional, permeable, Gator Base, or overlay application using concrete pavers and slabs or natural and wet cast stones. Gator XTreme Edge offers permanent continuous lateral support.



Paver Specifications

Product	Shape	Width (in.)	Length (in.)	Height (in.)	Thickness (mm)	SF/Pallet	Pcs/Pallet	Wgt/Pallet (lbs.)
Veranda (Bundled)	4x8	4	8	2 ³ / ₈	60	103	80	2,971
	8x8	8	8	2 ³ / ₈			80	
	8x12	8	12	2 ³ / ₈			80	
Veranda XL (Bundled)	8x16	8	16	2 ³ / ₈	60	103	20	2,971
	16x16	16	16	2 ³ / ₈			20	
	16x24	16	24	2 ³ / ₈			20	
Chateau (Bundled)	4x8	4	8	2 ³ / ₈	60	103	80	2,881
	8x8	8	8	2 ³ / ₈			80	
	8x12	8	12	2 ³ / ₈			80	
Chateau XL (Bundled)	8x16	8	16	2 ³ / ₈	60	103	20	2,881
	16x16	16	16	2 ³ / ₈			20	
	16x24	16	24	2 ³ / ₈			20	

Product	Shape	Width (in.)	Length (in.)	Height (in.)	Thickness (mm)	Pcs/SF	Layers/ Pallet	SF/ Pallet	Pcs/ Pallet	Wgt/Pallet (lbs.)
Village Cobble	6x6	6	6	2 ³ / ₈	60	3.62	10	116	420	3,035
Village Cobble	6x9	6	9	2 ³ / ₈	60	2.42	10	124	300	3,306
Village Cobble	9x9	9	9	2 ³ / ₈	60	1.62	9	111	180	3,040
Provence Cobble	6x6	6	6	2 ³ / ₈	60	3.62	10	116	420	3,159
Provence Cobble	6x9	6	9	2 ³ / ₈	60	2.42	10	124	300	3,370
Holland Stone	4x8	4	8	2 ³ / ₈	60	4.5	10	120	540	3,014
Coping	6x12	6	12	2 ³ / ₈	60	2	4	104	208	2,680
Breton (Bundled)	4x8	4	8	3 ¹ / ₈	80			86	64	3,074
Breton (Bundled)	8x8	8	8	3 ¹ / ₈	80				64	
Breton (Bundled)	8x12	8	12	3 ¹ / ₈	80				64	
Westminster	6x9	6	9	3 ¹ / ₈	80	2.42	7	86	210	2,926
Turfstone	6x12	6	12	2 ³ / ₈	60	2	4	104	208	2,680

Porcelain Tile Specifications

Product	Shape	Width (in)	Length (in)	Height (in)	Thickness (mm)	SF/Box	SF/Pallet	Pcs/Box	Boxes/ Pallet	Wgt/Pallet (lbs.)
Bluestone/Flagstone	12x12	12	12	³ / ₄	20	4.84	145	5	30	1,428
Bluestone/Flagstone	12x24	12	24	³ / ₄	20	7.75	124	4	32	2,401
Bluestone/Flagstone	24x24	24	24	³ / ₄	20	7.75	233	2	30	2,259
18x36 Tile	18x36	18	36	³ / ₄	20	8.72	235	2	27	2,278
24x24 Tile	24x24	24	24	³ / ₄	20	7.75	233	2	30	2,259
Plank	12x28	12	48	³ / ₄	20	7.75	279	2	36	2,693

Rosetta Specifications

Product	Units	Height (in)	Depth (in)	Length (in)	SF/LF Pallet	Pcs/Pallet	Wgt/Pallet (lbs.)
Outcropping	Pallet A	N/A	N/A	N/A	18	4	4,000
Outcropping	Pallet B	N/A	N/A	N/A	18	6	4,000
Outcropping	Pallet C	N/A	N/A	N/A	18	4	4,000
Outcropping	Corner Pallet	N/A	N/A	N/A	18	4	4,000
Belvedere Wall	6-pc system; all on one pallet.				27	72	2,475
	3" Small Unit	3	9	6			
	3" Medium Unit	3	9	12			
	3" Large Unit	3	9	18			
	6" Small Unit	6	9	6			
	6" Medium Unit	6	9	12			
	6" Large Unit	6	9	18			
Belvedere Corner	2-pc. system; both on one pallet.				24	32	1,520
	3" Corner Unit	3	9	15			
	6" Corner Unit	6	9	15			
Kodah Wall	4-pc system; all on one pallet.				21	18	2,400
	Small Unit	6	10½	12			
	Medium Unit	6	10½	21			
	Large Unit	6	10½	30			
	Extra Large Unit	6	10½	42			
Kodah Corner	6" Corner Unit	6	10½	21	31½	24	2,400
Dimensional Wall	Straight Unit	4	8	12	25	75	2,100
Dimensional Wall	Wedge Unit	4	8	12 / 7.5	33	100	2,000
Belvedere Coping	5 different units; all on one pallet.				66	72	1,550
	6"-Long Unit	2¼	10¼	6			
	12"-Long Unit	2¼	10¼	12			
	18"-Long Unit	2¼	10¼	18			
	18"-Long Unit (L)	2¼	10¼	18			
	18"-Long Unit (R)	2¼	10¼	18			
Belvedere Cap	Column Cap	2½	27	27	N/A	6	954
Belvedere Cap	Formal Cap	3	30	30	N/A	6	1,434
Dimensional Coping	3 different units; all on one pallet.				63	36	1,950
	Short Coping	2½	12½	18		12	
	Long Coping Unit	2½	12½	24		18	
	Finished-End Coping	2½	12½	19		6	
Dimensional Cap	Column Cap	2½	24	24	N/A	6	768
Dimensional Flagstone	All 6 shapes on one pallet: 8 layers/pallet, 6 shapes/layer 1 layer = 1 pattern 12¼ sf/layer				98	48	2,350

Rosetta specifications continued on next page.

Note: All dimensions shown are nominal.

Rosetta Specifications, con't.

Product	Shapes	SF/LF Pallet	Pcs/Pallet	Wgt/Pallet (lbs.)
Grand Flagstone	Random shapes, all 1¾" thick: 4 different 4-piece patterns 2 layers each pattern per pallet 8 layers/pallet, 11¼ sf per layer	90	30	2,160
Irregular Steps	(2x each of 3 shapes)	18	6	3,300
	7"H x 2'D x 5'L - 600 lbs. ea.			
	7"H x 2'4"D x 4'L - 567 lbs. ea.			
	7"H x 2'2"D x 3½'L - 476 lbs. ea.			

Product	Height (in)	Outside Dia. (in)	Inside Dia. (in)	Pcs/Pallet	Wgt/ Pallet (lbs.)
Dimensional Square Pit	12	44 x 44	N/A	48	1,109
Belvedere Round Pit	14½	58	37	52	1,200

Product	Height (in)	SF/Pallet	Pcs/Pallet	Wgt/ Pallet (lbs.)
Superior Steppers	2	52	16	1,300

- Unit dimensions vary by shape; roughly 27" x 21"
- 2x each or 8 different shapes



Wall Specifications

Product	Shapes	Height (in)	Depth (in)	Length (in)	SF/LF Pallet	Pcs/Pallet	Wgt/ Pallet (lbs.)
Ashland	Wedge	4	8	9	36	144	2,768
Yorkshire	Straight	4	12	8	30	90	2,588
Stonegate 3"	3-Piece System (bundled)				34	144	3,264
	3" Small Unit	3	10	6		48	
	3" Medium Unit	3	10	11		48	
	3" Large Unit	3	10	17		48	
Stonegate 6"	3-Piece System (bundled)				34	72	3,300
	6" Small Unit	6	10	6		24	
	6" Medium Unit	6	10	11		24	
	6" Large Unit	6	10	17		24	
	Square Cap	3	12	12	54	54	2,057
Stonegate Cont. 3"	3-Piece System (bundled)				34	144	3,264
	3" Small Unit	3	10	6		48	
	3" Medium Unit	3	10	11		48	
	3" Large Unit	3	10	17		48	
Stonegate Cont. 6"	3-Piece System (bundled)				34	72	3,300
	6" Small Unit	6	10	6		24	
	6" Medium Unit	6	10	11		24	
	6" Large Unit	6	10	17		24	
	3" Square Cap	3	12	12	54	54	2,052
Napa/Sonoma 3"	3-Piece System (bundled)				26	120	2,694
	3" Small Unit	3	9	6		40	
	3" Medium Unit	3	9	11		40	
	3" Large Unit	3	9	17		40	
Napa/Sonoma 6"	3-Piece System (bundled)				26	60	2,754
	6" Small Unit	6	9	6		20	
	6" Medium Unit	6	9	11		20	
	6" Large Unit	6	9	17		20	
	Column Unit	6	8	17		48	3,703
	3" Rectangle Cap	3	11½	15	45	36	1,484
StoneLedge 3"	3-Piece System				30	160	2,694
	3" Small Unit	3	10	6		40	
	3" Medium Unit	3	10	9		80	
	3" Large Unit	3	10	12		40	
StoneLedge 6"	3-Piece System				30	60	2,754
	6" Small Unit	6	10	6		20	
	6" Medium Unit	6	10	12		20	
	6" Large Unit	6	10	18		20	
	Column Unit	6	9	18		40	
	3" Rectangle Cap	3	11½	15	45	36	1,484

Wall specifications continued on next page.

Note: All dimensions shown are nominal.

Wall Specifications

Product	Shapes	Height (in)	Width (in)	Depth (in)	SF/LF Pallet	Pcs/Pallet	Wgt/Pallet (lbs.)
Regal Stone	6" High Unit	6	17¼	12	34	48	3,696
	6" Step Unit	6	16	12	16	24	2,214
	3" Universal Cap	3	15	13	56¼	45	2,169
Regal Stone Rock Face	6" High Unit	6	16	12	32	48	3,696
	6" Step Unit	6	16	12	16	24	2,214
	3" Universal Cap	3	15	13	56¼	45	2,169
Regal Stone Pro	8" High Unit	8	18	12	48	48	3,750
	8" Corner Unit	8	18	9	24	24	2,406
	3" Universal Cap	3	15	13	56¼	45	2,169
Regal Stone Pro Rock Face	8" High Unit	8	18	12	48	48	3,750
	8" Corner Unit	8	18	9	24	24	2,406
	3" Universal Cap	3	15	13	56¼	45	2,169
Compac	8" High Unit	8	18	12	45	45	3,700
	8" Corner Unit	8	18	9	30	30	3,200
	4" Rectangle Cap	4	18	12	72	48	3,400
Compac Contemporary	8" High Unit	8	18	12	40	40	3,700
	8" Corner Unit	8	18	9	30	30	3,200
	3" Square Cap	3	12	12	54	54	2,057
Cornerstone 100	8" High Unit	8	18	12	40	40	3,300
	8" Corner Unit	8	18	9	30	30	3,200
	4" Rectangle Cap	4	18	12	72	48	3,400

Trim & Finishing Specifications

Product	Shapes	Height (in)	Width (in)	Depth (in)	Wgt/Piece	Pcs/Pallet	Wgt/Pallet (lbs.)
Rock Face Cap	Wall Cap	2¼	48	12	120	12	1,440
Rock Face Cap	End Cap	2¼	51	12	130	12	1,560
Rock Face Step	Landscape Step	6	48	16	420	10	4,200
Rock Face Step	Landscape Step	6	72	16	616	6	3,696
Rock Face Tread	Step Tread	2¼	51	12	130	12	1,560
Rock Face Cap	30" Flat Column Cap	2	30	30	155	12	1,860
Rock Face Cap	28" Flat Column Cap	2	28	28	143	12	1,716
Rock Face Cap	30" Light-Top Cap	4	30	30	240	6	1,440
Rock Face Cap	28" Light-Top Cap	4	28	28	210	6	1,260
Napa Curbstone	Napa Curbstone	8	8	3	140	210	2,784
EdgeStone	EdgeStone	6	12	4	120	120	2,550

Fire Pit Specifications

Product	Type	Height (in)	Outside Dia (in)	Inside Dia (in)	Pcs/Pallet	Wgt/Pallet (lbs.)
Ashland	Round Pit	20½	48½	32½	85	1,685
Ashland	4-piece Coping		50	29½	4	240
Ashland	Round Steel Insert			28	1	35
StoneLedge	Round Pit	17½	50	30	102	1,740
StoneLedge	4-piece Coping		54½	29½	4	400
StoneLedge	Round Steel Insert			28	1	35
Yorkshire	Rectangle Pit	16½	56 x 44 x 16	36 x 24	65	1,885
Yorkshire	Square Pit	20½	44 x 44 x 16	28¼ x 28¼	50	1,142
Yorkshire	Rectangle Steel Insert		35½ x 23½ x 9		1	100
Yorkshire	Square Steel Insert		27¾ x 27¾ x 9¾		1	75

Hardscape Lifetime Transferable Warranty

NewLine Hardscapes backs our manufactured paver and wall products with a lifetime transferable warranty, guaranteeing our products against manufacturing defects. This warranty is for residential construction only and is applicable where products have been correctly installed to meet industry specifications. Color variances and the appearance of efflorescence do not constitute a warranty claim. Any defective products will be replaced; however, replacement labor and transportation costs are not included in this warranty. All warranty claims must be made prior to the removal or disposal of the defective product. We will honor this transferable warranty with a proof of purchase (invoice or delivery ticket).

The foregoing warranty is exclusive and in lieu of all other express or implied warranties of any kind. Furthermore, NewLine disclaims all implied warranties of merchantability as well as all implied warranties of fitness for a particular purpose. NewLine shall not be liable for any consequential damages or incidental damages arising from any warranty claim made against it.

NOTE: This warranty does not apply to any breakage, chipping or other deterioration that was caused by improper design or installation which does not comply with applicable codes, the ICPI, NCMA and recognized work procedures. Please visit www.icpi.org or www.ncma.org for more information on installation specifications. This warranty does not apply to any damage resulting from a natural disaster or from a deliberate and/or negligent act on the part of the purchaser, owner of the building, installer or any third party.

Color

The natural materials that we use in our paving stones and retaining wall products deliver a range of colors that closely match color samples in catalogs, spec books, color swatch books, and online photos. However, NewLine cannot guarantee exact color matching. Our pavers and walls can vary slightly in color depending on environmental conditions. Therefore, colors shown are approximate representations of standard colors and shouldn't be expected to be an exact match. Final color selections should be made at your local dealer from stock product or displays. NewLine always recommends immediately verifying the product and color upon receipt. If there are any discrepancies, contact your local dealer before continuing your project. Installation of the product constitutes its acceptance. Proper installation enhances the overall color of pavement. Units should be randomly picked from at least two pallets when installing. This creates a subtle blending of color.

Efflorescence

Our warranty does not apply to efflorescence. Efflorescence is a whitish, powderlike deposit that can appear on the surface of concrete pavers. When cement hydrates, calcium hydroxide is formed. A reaction occurs between the calcium hydroxide and carbon dioxide (from the air) to form water-insoluble calcium carbonate, which is then called efflorescence. Efflorescence does not have an effect on the structural performance or durability of the concrete pavers. NewLine includes admixtures in their concrete pavers to help minimize efflorescence, but efflorescence is a natural occurrence in all concrete products. NewLine does not warrant concrete pavers and/or walls that it manufactures against the appearance of efflorescence. Efflorescence may appear immediately or within months following installation. It may remain for months or some of it may wear away. Deposits may be removed from the concrete paver surface by using proprietary efflorescence-removers. Before applying any chemicals to remove deposits, please consult your local dealer for efflorescence removal chemicals.

Polymeric Haze

Polymeric haze from the use of polymeric joint sand may appear on your concrete products if the sand was not removed from the surface of the paver properly. This does not affect the integrity of the product or your installation. The hazing will weather away naturally with time and rain. It can be removed with a specialized cleaner; you are advised to contact your contractor or the polymeric sand company for advice on recommendations. NewLine accepts no responsibility or liability for this occurrence.

Construction Residue

A by-product of cutting with a saw is residue-filled water or concrete dust. Residue-filled water or re-hydrated dust can cling to the surface and leave a concrete stain. It is recommended to wash and remove the water or concrete dust from the surface of the pavers before it dries. Construction residue can also happen through soil disturbance or environmental elements. These contaminants should be removed immediately but do not affect the integrity of the product or your installation. NewLine accepts no responsibility or liability for these occurrences.

Compactor and Snow Removal

NewLine pavers with textured surfaces have high and low points on the surface that give them more of an aesthetic appeal. However, pavers with textured surfaces are susceptible to surface scuffing when they are compacted into place. Therefore, these types of pavers should always be compacted with plate compactors that incorporate a protective mat or other medium between the plate compactor and the surface of the NewLine pavers. This system will help ensure that paver surface scuffing is kept to a minimum. These protective mediums include: rubber matting, thin carpet or cardboard. Manufacturers of plate compactors are able to recommend other products that also can be used for this purpose. For further information on paver details, technical information and recommended construction practices, visit ICPI at www.icpi.org.

A plate compactor should not be used on our Porcelain Tile, Veranda/Chateau XL, and Rosetta Flagstone pavers. Also, snow removal equipment should have the proper spacing, bumpers, and rubber blade guards to protect the surface of the pavers. NewLine will not be held responsible for damage caused by the misuse of compaction or snow removal equipment which leaves scuff marks or burns on pavers.



stonegate contemporary in granite

FONTANA OUTDOORS

1901 Horseshoe Pike

Annville, PA 17003

717-867-2244

www.FontanaOutdoors.com

sales@fontanaoutdoors.com

